

Your life is **LIKE NO OTHER...**



Open Enrollment Guide

my.kp.org/shbp



Administered by

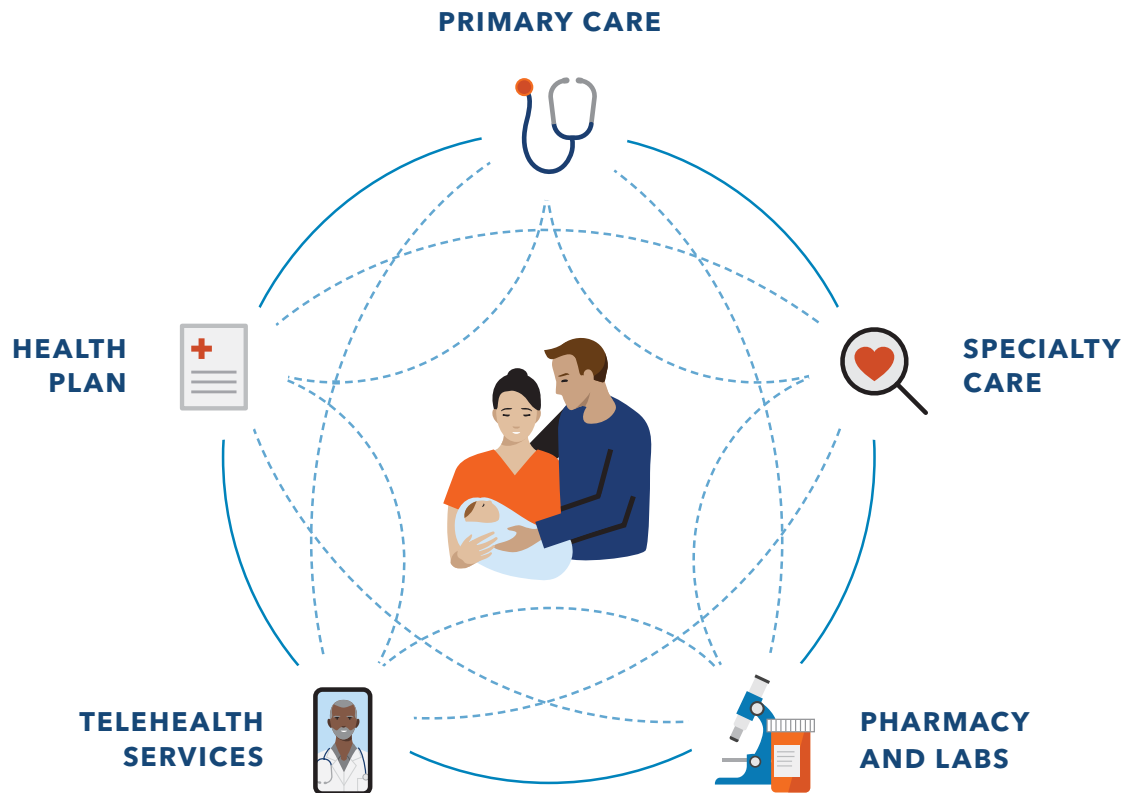


KAISER PERMANENTE®



...Fortunately,
Kaiser Permanente is too

LIKE NO OTHER



Truly connected care with you at the center

We built our care model to just make sense. Unlike traditional, disconnected health systems, we combine care and coverage together. Your doctors, hospitals, and health plan are connected in real time to your electronic medical record. So, we can always make sure we're on the same health page – yours!



To enroll, visit mySHBPga.adp.com. For questions, call us at **1-800-464-4000** (TTY **711**). We're available 24 hours a day, 7 days a week (closed holidays).

\$0

DEDUCTIBLE

\$0

CO-INSURANCE

\$1,000

IN REWARDS¹

CO-PAYS ONLY

State Health Benefit Plan (SHBP)²

Effective Dates: January 1 through December 31, 2024

Deductible, Co-insurance, and Out-of-Pocket Maximums		
Annual Deductible: Individual/Family \$0	Co-insurance \$0	Annual Out-of-Pocket Maximum Individual/Family \$6,350/\$12,700

Office Visits (Outpatient)

Primary Care	\$35 co-pay
Specialty Care	\$45 co-pay
Scheduled Prenatal Visits and First Postpartum Visit	Routine care covered at 100%
Vision Exam	\$0 co-pay, includes refractions
Telemedicine/Virtual Visit	Covered at 100%
Physical, Occupational, Speech Therapy, Cardiac Rehab	\$25 co-pay, up to 40 visits per calendar year for each therapy
Outpatient/Ambulatory Surgery	\$100 co-pay

Routine Preventive Care³

Wellness Exams – Physical and Well Woman Exams	Covered at 100%
Mammography Screening <ul style="list-style-type: none">Mammography screening for breast cancer for women over 40Mammography screening for breast cancer in other age groups as jointly determined by patient and physician	Covered at 100%
Pap Test	Covered at 100%
Prostate Specific Antigen (PSA) Test; Prostate cancer screenings (PSA and digital rectal exams)	Covered at 100%
Sigmoidoscopy/Colonoscopy	Covered at 100%
Well Child Care	Covered at 100%
Breast Cancer Medications (Tamoxifen and Raloxifene only)	Covered at 100%

Need help?

Call your Dedicated Member Services line at **855-512-5997** Monday - Friday, 7 a.m. to 7 p.m. ET and learn how to get the most out of your membership.

Lab and X-ray

Laboratory

Covered at 100% for services performed in a Kaiser Permanente Medical Center or a freestanding laboratory contracted with Kaiser Permanente; \$100 co-pay for services performed in an outpatient hospital setting

X-ray

Covered at 100% for services performed in a Kaiser Permanente Medical Center or a freestanding imaging center contracted with Kaiser Permanente; \$100 co-pay for services performed in an outpatient hospital setting

MRI/CT/PET/Nuclear Medicine

\$45 co-pay per scan for services performed in a Kaiser Permanente Medical Center or a freestanding imaging center contracted with Kaiser Permanente; \$100 co-pay when imaging is performed in outpatient hospital setting

Emergency Care

Ambulance (Ground or Air)	\$100 co-pay (per trip)
Emergency Room	\$200 co-pay (per visit); waived if admitted
Urgent Care	\$35 co-pay, at designated facilities

Hospital Care (Inpatient)

Inpatient	\$250 co-pay, per admission
Delivery and Inpatient Baby Care	\$250 co-pay, per admission

Work or reside

The State Health Benefit Plan members (and eligible dependents) are eligible to enroll in Kaiser Permanente if they work or live within the Service Area at the time of enrollment.⁴

Mental Health and Chemical Dependency

Mental Health Outpatient (Individual)	\$35 co-pay, unlimited visits per calendar year
Mental Health Outpatient (Group)	\$17 co-pay, unlimited visits per calendar year
Mental Health Inpatient	\$250 co-pay, unlimited days per calendar year
Chemical Dependency Outpatient (Individual)	\$35 co-pay, unlimited visits per calendar year
Chemical Dependency Outpatient (Group)	\$35 co-pay, unlimited visits per calendar year
Chemical Dependency Inpatient	\$250 co-pay, unlimited days per calendar year

Prescription Drugs

Day Supply	30-day supply
Generic Preferred	\$20 co-pay at Kaiser Permanente Pharmacies \$30 co-pay at Network Pharmacies for 1x fill ⁵
Brand Preferred	\$50 co-pay at Kaiser Permanente Pharmacies \$60 co-pay at Network Pharmacies for 1x fill ⁵
Non-Preferred	\$80 co-pay at Kaiser Permanente Pharmacies \$90 co-pay at Network Pharmacies for 1x fill ⁵
Mail Order - Day Supply	90-day supply
Mail Order - Generic Preferred	\$50 co-pay through Kaiser Permanente Pharmacies only
Mail Order - Brand Preferred	\$125 co-pay through Kaiser Permanente Pharmacies only
Mail Order - Non-Preferred	\$200 co-pay through Kaiser Permanente Pharmacies only

Other

Skilled Nursing Facility (SNF)	Plan pays 100%, up to 120 days per calendar year
Hospice Care	Covered at 100%
Home Health Care	Plan pays 100%, unlimited. Private Duty Nursing is not covered.
Durable Medical Equipment (DME)	Covered at 100%, unlimited
Chiropractic Care	\$45 co-pay, up to 20 visits per calendar year

Hearing (Routine Exams, Tests, and Fittings)

<ul style="list-style-type: none"> Hearing aids limited to \$1,500 every 5 years for adults Combined Benefit Maximum: \$3,000 per aid; per ear; every 48 months for children 18 years and younger 	Covered at 100%
---	-----------------

Infertility Diagnosis Office Visit

Limited to diagnostic services for the diagnosis of involuntary infertility only	\$45 co-pay
--	-------------

Infertility Diagnosis Only Laboratory, Radiology and Tests

Limited to diagnostic services for the diagnosis of involuntary infertility. Tests covered under "Diagnosis Only" are those only to rule out underlying medical issues. Tests and treatment related to reproductive issues are not covered.

Covered at 100% for services performed in a Kaiser Permanente Medical Center or a freestanding laboratory contracted with Kaiser Permanente; \$100 co-pay for services performed in an outpatient hospital setting

EARN UP TO
\$1,000
per household



2024 5-step Wellness Program

Each member and covered spouse who each completes the Kaiser Permanente Wellness Program by December 2, 2024 will receive a **\$500** reward card – **\$1,000** per household to spend on anything you choose!



Step 1: Accept your agreement

Sign on to kp.org/engage to accept your 2024 Wellness Program Agreement—check “yes,” then click submit.



Step 2: Take your Total Health Assessment

Complete your Kaiser Permanente Total Health Assessment (THA) online. The questionnaire is confidential and takes about 10 minutes.



Step 3: Know your numbers

Complete a Biometric Screening either at a Kaiser Permanente medical office, or by a Kaiser Permanente clinician at an SHBP-sponsored screening event.



Step 4: Get yourself screened

Complete all age and gender appropriate preventive screenings for breast, cervical, or colorectal cancer.



Step 5: Make a lifestyle change

Your choice - participate in either Wellness Coaching by Phone or complete a mission through the healthy lifestyle program.⁶ Call **1-866-862-4295**, Monday through Friday, 10:00 a.m. - 10:00 p.m ET to schedule Wellness Coaching by Phone.

You can expect a more connected experience from the start

We get it. Changing health plans can be daunting. That's why we guide you through each step of joining Kaiser Permanente, so you can start getting the care you need in no time.



Search profiles to find the right doctor

Our online doctor profiles let you browse the many doctors and locations in your area, even before you enroll. So, you can join knowing you've found a doctor who fits your needs.



Transition your care seamlessly

Easily move prescriptions and schedule a visit with a doctor who's close to your home, work, or school. From day one, you'll have the support you need to help reach your health goals.



Connect to care online

After you enroll, create an account at **kp.org** or download the Kaiser Permanente app. Then manage your health on your schedule – whenever, wherever.



Want to talk? We're here to help.

A Kaiser Permanente enrollment specialist can answer your questions – like where to get care or what membership perks are included. Call **855-512-5997** (TTY **711**), Monday through Friday, 7 a.m. to 7 p.m. ET.

So many ways to get care

You've got more ways to get quality care than ever before, so it's easier to stay on top of your health.



Visit us in person
at a location near you.



Talk to a health care professional
by phone or video.⁷



Email

Message your Kaiser Permanente doctor's office with nonurgent questions and get a reply usually within 2 business days.



Prescription delivery

Use the Kaiser Permanente app to fill prescriptions for delivery or same-day pickup.⁸



24/7 advice

Get on-demand support with 24/7 care advice by phone.



E-visit

Use our online symptom checker for certain conditions and get personalized care advice within a few hours.



Chat with a doctor

Chat live online with a Kaiser Permanente doctor for advice.

Care away from home

You're covered for urgent and emergency care anywhere in the world. And if you're planning to travel, we can help you stay on top of your health when you're away from home. We'll work with you to see if you need a vaccination, refill prescriptions, and more.



You're a member not a number

And members get the best deals.



Acupuncture, massage therapy, chiropractic care

Enjoy reduced rates on services to help you stay healthy.

kp.org/choosehealthy



Reduced rates on gym memberships

Stay active by joining a local fitness center, plus enjoy thousands of digital workout videos. kp.org/choosehealthy



Healthy lifestyle programs

Connect to better health with online programs to help you lose weight, quit smoking, reduce stress, and more. kp.org/healthylifestyle



Wellness coaching

Get help reaching your health goals by working one-on-one with a wellness coach by phone. kp.org/wellnesscoach

Extras for your total health



Use meditation and mindfulness to build mental resilience, reduce stress, and improve sleep.

kp.org/selfcareapps



Set mental health goals, track progress, and get support managing depression, anxiety, and more.

kp.org/selfcareapps

CLASSPASS

Choose from thousands of on-demand workout videos and get reduced rates on livestream and in-person classes.

kp.org/classpass



Get emotional support coaching via text.⁹



Members-only medical offices

Whether it's routine or after hours, in-town or away from home, we've got you covered.



Convenient care near you

With multiple locations to choose from, it's easy to find one near home or work. You can see your doctor, visit the pharmacy, and get a lab test under one roof at most of our facilities. We offer same-day, next-day, after-hours, and weekend services at many of our locations, along with ob-gyn, pediatrics, and other specialty departments.¹⁰ You can also see different doctors at different locations—whatever works best for you.



Finding the right location

Choosing a convenient place to get care is simple—just hop online and visit kp.org/facilities or grab your smartphone and use the Kaiser Permanente app.¹¹



Specialty care when you need it

We're here for you if you get sick or need specialty care. With one of the largest multispecialty medical groups in Atlanta, we can conveniently connect you with the right specialist. And there are no referrals needed to see select Kaiser Permanente specialists.



Getting care anytime, anywhere

Urgent care¹²

Many facilities offer services for nonemergency, urgent medical needs that require immediate attention—open 7 days a week.¹³

Emergency care

If you ever need emergency care, you're covered. You can always get care at any hospital emergency department.¹⁴

Care away from home

If you get hurt or sick while traveling, we'll help you get care. We can also help you before you leave town by checking to see if you need a vaccination, refilling prescriptions, and more. Just call our 24/7 Away from Home Travel Line¹⁵ at **951-268-3900** or visit kp.org/travel.

Pharmacy like no other

Our award-winning pharmacy system is the very heart of our "under one roof" care experience. In most of our 25 medical offices, you can pick up your prescription or consult a Kaiser Permanente pharmacist on your way out the door. No more traffic. No more stops.



Getting started

Whether you're transitioning from another provider or simply starting out fresh, it's easier than you think to get started at Kaiser Permanente.



Medical center pharmacies

Our medical centers feature fully stocked pharmacies right on site.



Prescription delivery

Seeing your doctor virtually? No problem, you can either come in to one of our pharmacies or have your prescription delivered at no cost.



Refills

You can easily get refills by ordering online or through the Kaiser Permanente app. Or just call our 24-hour refill line.

Pharmacy questions

If you have questions or would like a copy of our preferred drug list, call us directly at **855-512-5997**, Monday through Friday, 7 a.m. to 7 p.m. ET or visit **[kp.org/formulary](https://www.kp.org/formulary)**.



Specialties, from A to X

Whether it's one of the 45+ specialties offered in one of our Comprehensive Medical Centers in and around Atlanta or through one of our affiliated partners, you'll always get the care you need.

Services you can expect at most Kaiser Permanente medical offices:



Primary, Pediatric,
Family Medicine



Pharmacy



Lab



X-ray

- 24/7 Advanced Care
- Adult Medicine
- Audiology
- Behavioral Health
- Cardiology
- Child and Adolescent Psychiatry
- CT/MRI
- Dermatology
- DEXA Scan
- Endocrinology
- Express Care
- Family Medicine
- Gastroenterology
- General Surgery
- Geriatrics
- Hand Surgery
- Health Education
- Heart Failure Clinic
- Hematology/Oncology
- Infectious Diseases
- Infusion Center
- Lab Services
- Nephrology
- Neurology
- Nuclear Medicine
- Nutrition
- OB/GYN
- Oncology
- Ophthalmology
- Optometry
- Orthopedic Surgery
- Pain Management
- Palliative Care
- Pediatrics/Adolescent Medicine
- Pharmacy
- Plastic Surgery
- Podiatry
- Psychiatry
- Psychology
- Pulmonology
- Rheumatology
- Routine Mammography
- Sleep Medicine
- Sports Medicine
- Ultrasound
- Urgent Care
- Urogynecology
- Urology
- Vascular Surgery
- Weight Management
- X-ray



Care options when you need them

If you ever need emergency care, you're covered. You can get emergency care at any hospital emergency room, no matter what. But when your situation requires a planned trip to the hospital –like a surgery, for instance– we're proud to offer our effective model of care at Emory Decatur Hospital and Emory Saint Joseph's Hospital, where Kaiser Permanente doctors are on staff 24/7. You may also be seen at one of our hospital partners listed below. For the most up-to-date listing, visit kp.org/locations and type hospitals in the search box.

Our hospital partners include:¹⁶

EMORY
HEALTHCARE



NH
NORTHSIDE HOSPITAL





Kaiser Permanente 24/7 Urgent Care

Gwinnett Comprehensive Medical Center

3650 Steve Reynolds Boulevard
Duluth, GA 30096
24 hours a day,
7 days a week

Southwood Comprehensive Medical Center

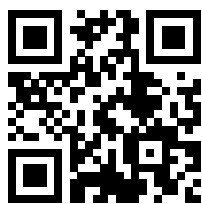
2400 Mt. Zion Parkway
Jonesboro, GA 30236
24 hours a day,
7 days a week

TownPark Comprehensive Medical Center

750 TownPark Lane
Kennesaw, GA 30144
24 hours a day,
7 days a week

Affiliated Community Urgent Care Locations

With over 80 affiliated Urgent Care locations across metro Atlanta and surrounding counties, we've got you covered. Go to kp.org/FindUrgentCare/ga and type urgent care in the search box or scan the code to the right to find an urgent care center near you.



Hover your phone over the QR code to search Urgent Care locations.

Locations are subject to change. Visit kp.org/FindUrgentCare/ga for the most up-to-date listing.

Endnotes

1. Each member and covered spouse who each complete the Kaiser Permanente 2024 Wellness Program by December 2, 2024 will receive a \$500 reward card – up to \$1,000 per household.
2. This is a summary of your benefits and their co-pays. This is not a contract. A complete list, exclusions and limitations are contained in the *Evidence of Coverage*. In the case of a conflict between this benefit summary and the *Evidence of Coverage*, the *Evidence of Coverage* will prevail. For specific questions about coverage, please contact Kaiser Permanente Member Services at **1-855-512-5997**.
3. Preventive Services are based on recommendations by the United States Preventive Services Task Force, the Health Resources, and Service Administration and the Centers for Disease Control and Prevention. Additional services are mandated by the State of Georgia. We will cover all federal- and state-mandated benefits as required by law. Kaiser Permanente health professionals will determine if services are medically necessary for each member. A service is considered medically necessary if it's medically required to prevent, diagnose, or treat a member's condition or clinical symptoms, and it's consistent with generally accepted professional standards of care in the community. (Preventive Services must be coded as preventive, state-mandated, a screening, age-appropriate, meet frequency guidelines, and be delivered by a network provider.)
4. You must live or work in one of the below 27 counties within the Metro Atlanta Service Area to be eligible to enroll in KP: Barrow, Bartow, Butts, Carroll, Cherokee, Clayton, Cobb, Coweta, Dawson, DeKalb, Douglas, Fayette, Forsyth, Fulton, Gwinnett, Haralson, Heard, Henry, Lamar, Meriwether, Newton, Paulding, Pickens, Pike, Rockdale, Spalding, or Walton.
5. For immediate service after an emergency visit, prescriptions may be filled at Rite Aid or Walgreens at a co-pay \$10 higher than those listed above. This is for a first fill **ONLY** per prescription. Subsequent refills must be filled through Kaiser Permanente Pharmacies, either at our facilities or through our mail order/home delivery option. Please note: Kaiser Permanente has extended pharmacy hours at our Southwood, TownPark, and Gwinnett Comprehensive Medical Centers: Monday – Sunday, 7 a.m. to 11 p.m. ET. Most Kaiser Permanente medical offices have a pharmacy located on-site, several with evening and weekend hours. For details, please contact Kaiser Permanente Member Services at **1-855-512-5997**.
6. You can take the Total Health Assessment or the healthy lifestyle programs as often as you like, but you can only earn credit for the assessment or check in for the first week of any mission once during the reward period.
7. When appropriate and available. If you travel out of state, phone appointments and video visits may not be available due to state laws that may prevent doctors from providing care across state lines. Laws differ by state.
8. Available on most prescription orders; additional fees may apply. For more information, contact the pharmacy.
9. The Ginger coaching services are not covered under your health plan, are not a Medicare-covered benefit, and are not subject to the terms set forth in your Summary Plan Description or other plan documents. These services may be discontinued at any time without notice. The coaching services are not available to any members under 18 years old.
10. In the case of a pandemic, some facilities may be closed or offer limited hours and services.
11. To use the Kaiser Permanente app, you must be a Kaiser Permanente member registered on **kp.org**.
12. An urgent care need is one that requires prompt medical attention, usually within 24 or 48 hours, but is not an emergency medical condition. This can include minor injuries, backaches, earaches, sore throats, coughs, upper-respiratory symptoms, and frequent urination or a burning sensation when urinating.
13. See note 10.
14. If you believe you have an emergency medical condition, call 911 or go to the nearest hospital. For the complete definition of an emergency medical condition, please refer to your *Evidence of Coverage* or other coverage documents.
15. This number can be dialed inside and outside the United States. Before the phone number, dial "001" for landlines and "+1" for mobile lines if you're outside the United States. Long-distance charges may apply, and we can't accept collect calls. The phone line is closed on major holidays (New Year's Day, Easter, Memorial Day, July Fourth, Labor Day, Thanksgiving, and Christmas). It closes early the day before a holiday at 10 p.m. Pacific time (PT), and it reopens the day after a holiday at 4 a.m. PT.
16. The hospital you will be admitted to for inpatient care is determined by the primary care physician you select. Some locations are available only in specific cases. In an emergency, you have access to any hospital emergency room.

NONDISCRIMINATION NOTICE

Kaiser Foundation Health Plan of Georgia, Inc. (Kaiser Health Plan) complies with applicable Federal civil rights laws and does not discriminate on the basis of race, color, national origin, age, disability, or sex. Kaiser Health Plan does not exclude people or treat them differently because of race, color, national origin, age, disability, or sex. We also:

- Provide no cost aids and services to people with disabilities to communicate effectively with us, such as:
 - Qualified sign language interpreters
 - Written information in other formats, such as large print, audio, and accessible electronic formats
- Provide no cost language services to people whose primary language is not English, such as:
 - Qualified interpreters
 - Information written in other languages

If you need these services, call **1-888-865-5813** (TTY: **711**)

If you believe that Kaiser Health Plan has failed to provide these services or discriminated in another way on the basis of race, color, national origin, age, disability, or sex, you can file a grievance by mail at: Member Relations Unit (MRU), Attn: Kaiser Civil Rights Coordinator, Nine Piedmont Center, 3495 Piedmont Road, NE Atlanta, GA 30305-1736. Telephone Number: 1-888-865-5813.

You can also file a civil rights complaint with the U.S. Department of Health and Human Services, Office for Civil Rights electronically through the Office for Civil Rights Complaint Portal, available at <https://ocrportal.hhs.gov/ocr/portal/lobby.jsf>, or by mail or phone at: U.S. Department of Health and Human Services, 200 Independence Avenue SW., Room 509F, HHH Building, Washington, DC 20201, 1-800-368-1019, 1-800-537-7697 (TDD). Complaint forms are available at <http://www.hhs.gov/ocr/office/file/index.html>.

HELP IN YOUR LANGUAGE

ATTENTION: If you speak English, language assistance services, free of charge, are available to you. Call **1-888-865-5813** (TTY: **711**).

አማርኛ (Amharic) ማስታወሻ: የሚናገሩት ቋንቋ አማርኛ ከሆነ የትርጉም እርዳታ ድርጅቶች፣ በነጻ ሊያግዝዎት ተዘጋጅተዋል፡ ወደ ሚከተለው ቁጥር ይደውሉ **1-888-865-5813** (TTY: **711**).

العربية (Arabic) ملحوظة: إذا كنت تتحدث العربية، فإن خدمات المساعدة اللغوية تتوافر لك بالمجان. اتصل برقم **1-888-865-5813** (TTY: **711**).

中文 (Chinese) 注意: 如果您使用繁體中文，您可以免費獲得語言援助服務。請致電 **1-888-865-5813** (TTY: **711**)。

فارسی (Farsi) توجه: اگر به زبان فارسی گفتگو می کنید، تسهیلات زبانی بصورت رایگان برای شما فراهم می باشد. با **1-888-865-5813** (TTY: **711**) تماس بگیرید.

Français (French) ATTENTION: Si vous parlez français, des services d'aide linguistique vous sont proposés gratuitement. Appelez le **1-888-865-5813** (TTY: **711**).

Deutsch (German) ACHTUNG: Wenn Sie Deutsch sprechen, stehen Ihnen kostenlos sprachliche Hilfsdienstleistungen zur Verfügung. Rufnummer: **1-888-865-5813** (TTY: **711**).

ગુજરાતી (Gujarati) સુચના: જો તમે ગુજરાતી બોલતા હો, તો નિ:શુલ્ક ભાષા સહાય સેવાઓ તમારા માટે ઉપલબ્ધ છે. ફોન કરો **1-888-865-5813** (TTY: **711**).

Kreyòl Ayisyen (Haitian Creole) ATANSYON: Si w pale Kreyòl Ayisyen, gen sèvis èd pou lang ki disponib gratis pou ou. Rele **1-888-865-5813** (TTY: **711**).

हिन्दी (Hindi) ध्यान दें: यदि आप हिंदी बोलते हैं तो आपके लिए मुफ्त में भाषा सहायता सेवाएं उपलब्ध हैं। **1-888-865-5813** (TTY: **711**) पर कॉल करें।

日本語 (Japanese) 注意事項: 日本語を話される場合、無料の言語支援をご利用いただけます。**1-888-865-5813** (TTY: **711**) まで、お電話にてご連絡ください。

한국어 (Korean) 주의: 한국어를 사용하시는 경우, 언어 지원 서비스를 무료로 이용하실 수 있습니다. **1-888-865-5813** (TTY: **711**) 번으로 전화해 주십시오.

Naabeehó (Navajo) Díí baa akó nínízin: Díí saad bee yáníłti'go Diné Bizaad, saad bee áká'ánída'áwo'déé', t'áá jiik'eh, éí ná hóló, kojí' hódíłnih **1-888-865-5813** (TTY: **711**).

Português (Portuguese) ATENÇÃO: Se fala português, encontram-se disponíveis serviços linguísticos, grátis. Ligue para **1-888-865-5813** (TTY: **711**).

Русский (Russian) ВНИМАНИЕ: если вы говорите на русском языке, то вам доступны бесплатные услуги перевода. Звоните **1-888-865-5813** (TTY: **711**).

Español (Spanish) ATENCIÓN: si habla español, tiene a su disposición servicios gratuitos de asistencia lingüística. Llame al **1-888-865-5813** (TTY: **711**).

Tagalog (Tagalog) PAUNAWA: Kung nagsasalita ka ng Tagalog, maaari kang gumamit ng mga serbisyo ng tulong sa wika nang walang bayad. Tumawag sa **1-888-865-5813** (TTY: **711**).

Tiếng Việt (Vietnamese) CHÚ Ý: Nếu bạn nói Tiếng Việt, có các dịch vụ hỗ trợ ngôn ngữ miễn phí dành cho bạn. Gọi số **1-888-865-5813** (TTY: **711**).



Scan here for an
interactive map.

- KP Kaiser Permanente Medical Facilities
- KP Kaiser Permanente Comprehensive Medical Centers
- U Affiliated Community Urgent Care Centers
- H Affiliated Hospitals



Kaiser Foundation Health Plan of Georgia, Inc.
Nine Piedmont Center
3495 Piedmont Road NE
Atlanta, GA 30305

\$0 DEDUCTIBLE

\$0 CO-INSURANCE

\$1,000 IN REWARDS¹

CO-PAYS ONLY

Your life is like no other

Choose health care that is centered around you

Having a good health plan is important. So is getting quality care.
With Kaiser Permanente, you get both.

Learn more

my.kp.org/shbp

Enroll today

mySHBPga.adp.com

Dedicated Member Services

1-855-512-5997

Monday through Friday,
7 a.m. to 7 p.m. ET

Health line

404-365-0966

Appointment Scheduling or
Prescription Help,
Monday through Friday, 7 a.m. to 7 p.m. ET
Nurse Advice 24/7

